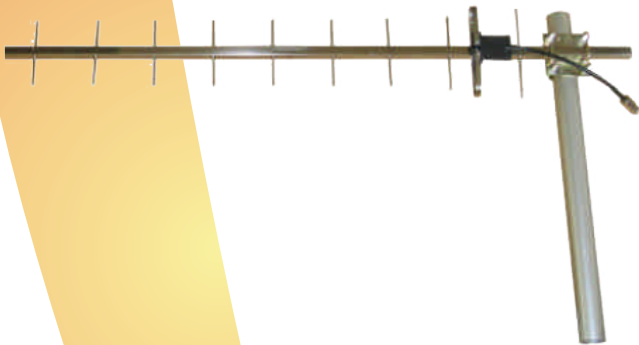


Specifications

| | |
|-----------------------|------------------------|
| Frequency: | 806-960 MHz |
| Bandwidth: | 70 MHz |
| Gain: | 13 dBi |
| Horizontal Beamwidth: | 30° |
| Vertical Beamwidth: | 30° |
| F/B Ratio: | ≥18 |
| VSWR: | ≤1.5 |
| Impedance-Ω: | 50 |
| Polarization: | Vertical |
| Max Power: | 100 W |
| Connector: | N Female or Customized |
| Length: | 64.2" inches |
| Weight: | 2.75 lbs. |
| Mount Mast Diameter: | Φ1.5" to 2.0" |



Applications

- CDMA/GSM/RFID System
- Repeater Station or Long Distance terminal
- Highway or tunnel coverage or long distance receive

Features

- High Gain, Low VSWR
- Stainless Steel, Strong corrosion resistance
- Compatible with Vertical or Horizontal Polarization